

GENESYNTHESIS

Deep GENESYNTHESIS its politics on three points of force: •L' I use of Centers of Search highly characterized, that they second operate how much previewed from the Lines Guide GLP of the ministry of the Health. •Il support of staff highly specialized. •La search continues and the taken care of selection of raw materials that joined to the incessant experimentation allow to the putting to point of new technologies and new concepts of product.

COSMETIC FIELD

GeneSynthesis concentrates remarkable resources in Research & Development and the control quality. GeneSynthesis is specialized in the formulation and preparation of cosmetic and druggist products that contraddistinguono for elevated concentration of active principles.

The line of the new ones prepares to you in order to contrast the inestetismi of the cellulitis as an example takes advantage of active principles of natural origin whose effectiveness is by now famous for a long time (Arboreal Ivy, Ippocastano and its saponine, Fucus Vesciculosus, I understand, Marine Oak, xantiniche Allantoina, Caffein and the other bases, Guaranà). The innovation consists in the preparativa technology and in the elevated concentration and purity of the active principles it employs to you that they concur to obtain excellent and long-lasting turns out to you.

GeneSynthesis organizes, moreover, assigned course of formation for to the field also on specific demand.

In the field of the cosmetic, insomma, the more recent GeneSyntesis extension perfect connubio between the tradition and discoveries in chemistry and the biotechnology.

CLINICAL FIELD - COSMETIC

GeneSynthesis, assets also in the field of the genetics, is taken care moreover of development, production and commercialization of Kit for diagnostic and prognostiche analyses bases to you on molecular techniques for applications in the fields of the virologia, bacteriology, parasitology and micologia, molecular genetics and oncologia. These products are mainly assign you to the use hospital worker, to the laboratories of clinical analyses and the centers of search.



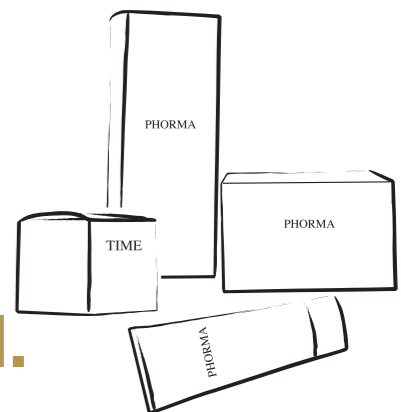
Cosmetic and druggist products

General catalogue

GeneSynthesis S.r.l.

15067 Novi Ligure (AL)
Tel. +39 0143 321 802 - Fax +39 0143 322 020
e mail: info@genesynthesis.it - www.genesynthesis.it

GeneSynthesis S.r.l.



PHORMA



Anti-cellulite cream intense action

Ingredient list:

Aqua (Water), C12-C15 alkyl benzoate, Octyldodecylmiristate, Prunus dulcis, Tribehenin PEG-20 esters, Caffeine, Propylen glycol, Glycerin, Dimethicone, Cetearyl alcool, Cera alba (Beeswax), Methyl nicotinate, Theophylline, Imidazolidynil urea, Paullina capuana, Theobromine, Phenoxyethanol, Parfum, Methylparaben, Ethylparaben, Propylparaben, Butylparaben.

Indications:

Cream by high concentration of active ingredients, adjuvant in the treatment of cellulite's blemishes.

Active Ingredients:

Guaranà, Caffèina pura, Teobromina, Teofillina, Metile nicotinato.

Cream's salient characteristics

The high concentration of natural active ingredients (5% of Caffeine, 4% og Guarana extract, 1% of xanthic bases – Theobromine and Theophylline) allows a specific action against the cutaneous blemishes connected to the cellulite, increasing the local micro-circulation and, at the same time protecting blood vessels and capillaries.

This cream, with her soft and not unctuous consistency, allows an immediate absorption and doesn't create greasy effects.

Then, this product is applicable at any minute of the day, better after the shower or the bath.

This formula very moisturizing, thanks to Almond oil, produces, after some minutes from rhe application, an evident state of heat, which disappears after ten minutes.

This cream, with her light fragabnce, doesn't create disagreeable interactions with your usual perfume.

The product is formulated for professional use but assures excellent results also for application at home

Packaging:
Tube 6.7 o.z.

Anti-cellulite cream intense action



Silky anti-cellulite cream

Ingredient list:

Aqua (Water), C12-C15 alkyl benzoate, Octyldodecylmyristate, Tribehenin PEG-20 esters, Caffeine, Prunus dulcis, Propylen glycol, Glycerin, Dimethicone, Cetearyl Alcohol, Cera alba (Beeswax), Theophylline, Imidazolidinyl urea, Paullina capuana, Phenoxyethanol, Parfum, Methylparaben, Ethylparaben, Theobromine, Propylparaben, Butylparaben.

Indications:

Cream by high concentration of active ingredients, adjuvant in the treatment of cellulite's blemishes with a formula very nourishing for the skin.

To apply the cream in the morning and in the evening in the body's area interested by beauty problems, for at least one month, with a light massage until total absorption.

Active Ingredients:

Guaranà, Caffèina pura, Teobromina, Teofillina.

Cream's salient characteristics

The high concentration of natural active ingredients (Guarana extract, Caffeine, Theobromine and Theophylline) allows a specific action against the cellulite's cutaneous blemishes, increasing the local micro-circulation and, at the same time, protecting blood vessels and capillaries.

This cream is indicated also in the event of capillaries fragility, because doesn't induces any cutaneous heating.

Then, thanks to her very moisturizing and nourishing formula, the cream makes the skin soft and silky. With a light fragrance (for not creating disagreeable interactions with your usual perfume), this product is marked by a delicate texture with an high power of absorption which allows to get dressed immediately after the application.

Packaging:
Tube 6.7 o.z.

PHORMA



Anti-cellulite gel not perfumed

Ingredient list:

Aqua (Water), Alcohol, Glycerin, Propylen Glycol, Caffeine, Aesculus hyppocastanum Carbomer, Allantoin, Theophilline, Methylparaben, Sodium hydroxide, Paullina capuana, Teobromine, Propylparaben, Phenoxyethanol, Ethylparaben, Butylparaben.

Indications:

Gel by rapid absorption, rich in active ingredients, adjuvant in the treatment of cellulite's blemishes. It's advised to apply a light layer, helping the active ingredients' absorption with a delicate massage upward.

For sure and permanent results, the following modalities are advised:

Attack strategy: two applications per day

Prevention and preservation: one application per day.

Active Ingredients:

Caffeina, Teobromina, Teofillina, Allantoina, Guaranà, Ippocastano.

Cream's salient characteristics

Thanks to her formula, rich of natural ingredients (Hyppocastanum and Guarana extracts and xanthic bases), this gel develops a specific action against the cellulite's blemishes, protecting, at the some time , bood vellels and capillaries.

The presence of Allantoin increases also the processes of tissue's repair, making the skin soft, elastic and silky.



Packaging:
Tube 6.7 o.z.

Anti-cellulite gel not perfumed



Dermo-plastic mud

Ingredient list:

Aqua (Water), Fucus vesiculosus, Glycerin, Alcohol, Hedera elix, Capsicum annum, Aesculus hyppocastanum, Propylparaben, Methylparaben.

Indications:

To apply a uniform layer in the body's areas interestead by beauty problems.

To let work for about 20 minutes them to remove with some tepid water, if necessary with the help of a loofah.

The skin will appear more tonic and pyrified since the first applications.

It's advised to make the application every other day (for the first week) and to continue, for the preservation, with one weekly application for the desired time.

Active Ingredients:

Iga Fucus, Edera, Ippocastano, Capsico.

Mud's salient characteristics

Product seaweeds and vegetal extracts based, which develop a tonic and draining action for the tissues. The iodine is an essential element in the preservation of the tone and consistency of the skin and in the optimal blood spraying of the muscular and epithelial cells.

It's included in very large amounts in the seaweeds and when it's adsorbed by the tissues increases the cellular metabolism acting a bio-activator.

Packaging:
Vase 16.9 o.z.



Scrub mud

Ingredient list:

Aqua (Water), Fucus vesiculosus, Glycerin, Alcohol, Hedera elix, Capsicum annum, Aesculus hyppocastanum, Propylparaben, Methylparaben.

Indications:

To apply a uniform layer in the body's areas interestead by beauty problems.

To let work for about 20 minutes them to remove with some tepid water, if necessary with the help of a loofah.

The skin will appear more tonic and pyrified since the first applica-tions.

It's advlyed to make the application every other day (for the first week) and to continue, for the preservation, with one weekly appli-cation for the desired time.

Active Ingredients:

Alga Fucus, Edera, Ippocastano, Capsico.

Mud's salient characteristics

Product seaweeds and vegetal extracts based, which develops a tonic and draining action. The structure of the micronized seaweed allows – with a light massage – to obtain an excellent scrub effect, releasing the skin from the dead cells and the impurity present in the surface and so allowing a better action of the product applied. Then, thanks to its particular properties, this mud gives the skin back the elasticity, tonicity and consistency lost.

Packaging:
Vase 16.9 o.z.

Thalasso scrub

Ingredient list:

Maris sal, Propylen glycol, Acqua (Water), Andansonia digitata (Baobab) seed oil, Camelia sinensis, Theobroma cacao, Aloe barbadensis, Citrus limonum, Cammiphora myrra, Illicium verum, C.I. 42090, Parfum, Phenoxyethanol, Methylparaben, Ethylparaben, Butylparaben, Propylparaben.

Indications:

to massage on lightly wet skin for a more delicate scrub action or on dry skin for a more exfoliative effect, delaying on the body's areas interested by cutaneous thickenings and irregularities.

Active Ingredients:

Cacao, Aloe, Mirra, Anice Stellato, Olio Vergine di Baobab, Limone, Thé Verde.

Thalasso's salient characteristics

Sea salt rich of vegetal extracts is a precious ally for the skin's care and health; it helps the renewal of the skin with a smoothing action which removes the impurities and the dead cells.

Since the first application the thalasso gives a feeling of well-being and intense nourishing. This product, regularly used, helps to resolve the problems connected to the excessive activity of sebaceous glands. In fact the synergic action of many vegetal extracts (cacao, aloe, lemon, myrrh, anise, green tea, baobab) helps to make the skin soft and silky thanks to the high contribution of nourishing, emollient and elasticizing active ingredients.

Packaging:
Vase 16.9 o.z.





Firming breast gel

Ingredient list:

Aqua (Water), Propylen glycol, Carbomer, Kigelia africana, Quillaja saponaria, Disodium EDTA, Methylparaben, Sodium hydroxide, Propylparaben, Phenoxyethanol, Ethylparaben, Butylparaben.

Indications:

this gel regularly applied on the décolleté and the breast (being careful to escare the nipples' area), firms and tones the skin making it more elastic, preventing in this way the strias and the tissues' relaxation.

Active Ingredients:

Quillaja saponaria e Kigelia africana.

Product's salient characteristics

Rich of bio-vegetal active ingredients the product acts in the support's structures of the skin, contrasting the relaxation and the tone's reduction. This gel develops an excellent progressive firming action, helping the décolleté to acquire day after day more tonicity. The elasticizing and anti-relaxation action helps to minimize and oppose the appearance of strias.

Packaging:
Tube 1.69 o.z.



Regenerating body's cream

Ingredient list:

Aqua (Water), Prunus dulcis, Caprylic/capric triglycerides, Cetyl alcohol, Glycerin, Buxus chinensis (Jojoba oil), Olea europea, Butyrospermum parkii (Shea butter), Cyclomethicone, C12-C15 acid PEG-8 ester, Glyceril stearate, Sodium acrylates copolymer, Mineral oil, Allantoin, Glycine soya, Parfum, Imidazolidinylurea, Tocopheryl acetate, Propylen glycol, Retinyl palmitate, Phenoxyethanol, PPG-1 trideceth 6, Hydroxypropyltrimonium hydrolized casein, Hydrolized milk protein, Methylparaben, Ethylparaben, Propylparaben, Butylparaben, Sodium cocoyl glutamate.

Indications:

cream with moisturizing and nourishing action for the body.

Active Ingredients:

Olio di Jojoba, Olio di mandorle, Burro di Karitè, Proteine del latte, Proteine della Soja, Vitamina E.

Cream's salient characteristics

The presence of jojoba oil, almond oil and shea butter, gives to this cream an high nourishing power, while the milk's and soya's proteins give the skin back the moisturizing, regenerating it in intense way.

Packaging:
Tube 6.7 o.z.

PHORMA



Fluid gel against the problems connected with venous insufficiency

Ingredient list:

Aqua (Water), Alcohol, Propylen glycol, Aesculus hyppocastanum, Centella asiatica, Carbomer, Vitis vinifera, disodium EDTA, Methylparaben, Sodium hydroxide, Propylparaben, Phenoxyethanol, ethylparaben, Butylparaben.

Indications:

The high concentration of the active ingredients develops a special vasoconstrictive and vasoprotector action and makes its formula specific against venous insufficiency.

To apply in the morning and in the evening with a massage from the bottom to the top.

Active Ingredients:

Ippocastano, Centella asiatica, Vite rossa.

Gel's salient characteristics

The extracts of Horse chestnut, Centella Asiatica and Red grapevine strengthen the vessels' walls and check their permeability reducing the spill of liquids which stand in the tissues, and helping, at the same time, their elimination.

Daily used, it results an excellent help in the preservation of varicose veins and capillaries' fragility and reduces the swelling and the weight's feeling.

Packaging:
Tube 6.9 o.z.



Fluid gel against the problems connected with venous insufficiency



Wearying legs gel

Ingredient list:

Aqua (Water), Alcohol, Glycerin, Menthol, Carbomer, Imidazolidinyl urea, Aesculus hyppocastanum, Vitis vinifera, Centella asiatica, C.I. 42090, Sodium hydroxyde.

Indications:

To spreads the wearying gel starting from the ankles, with a light massage upward, going up a long the calf until the groin.
To apply the gel one or more times in the day according to the necessity.

Active Ingredients:

Centella asiatica, Vite rossa, Ippocastano, Mentolo.

Gel's salient characteristics

Its formula utilizes active ingredients important for their specific action about the blood circulation.
This gel immediately gives a feeling of confort and benefit to the tired legs after a working day and sport's activity, protecting, at the some time, from an excessive capillaries' fragility and permeability. The constant use helps the circulation and preserves the capillaries' vessels, representing a valid help for the preservation of capillaries' fragility.

Packaging:
Tube 6.9 o.z.

Intensive Cream

Ingredient list:

Aqua (Water), Cyclomethicone, Dimethicone, Octylmethoxycinnamate, Glycerin, Juglans regia (walnut) seed, Carbomer, Tocopheryl acetate, Imidazolidinyl urea, Malachite extract, Polyacrylamide, C13-C14 Isoparaffin, Dodium acrylate/acryloyldimethyl taurate copolymer, Isohexadecane, Laureth-7, Polysorbate-80, Phenoxyethanol, Propylene glycol, Parfum (Fragrance), Methylparaben, Ethylparaben, Propylparaben, Butylparaben.

Indications:

Use it everyday to defend skin by free radicals, then nourish in depth, to prevention the action of external agents and skin ageing.

Active Ingredients:

Juglans regia, Vitamina E, Malachite.

Salient characteristics of the product:

To apply the cream also too several times during the day, with light massage.

Particular structure of oligopeptides presents contribute high penetrability and direct action on the proliferation of keratinocytes.

The presence of malachite presents a targeted control of oxidative stress with significative contribution of oligoelements.

Packaging:
Vase 1.69 o.z.





Fluid restitutive cream

Ingredient list:

Aqua (Water), Cyclomethicone, Carbomer, Dimethicone, Octylmethoxycinnamate, Glycerin, Imidazolidinyl urea, Tocopheryl acetate, Hydroxyethyl acrylate/sodium acryloyldimethyl taurate copolymer, Isohexadecane, Squalane, Rethynil palmitate, Polysorbate-60, Polisorbate 80, Phenoxyethanol, Parfum (Fragrance), Vegetable oil, Sodium stearoyl lactylate, Sodium lactate, Cetyl alcohol, Sodium carboxymethyl betaglucan, Glicine soja/glicine soja (soybean) sterols, Carnosine, Methylparaben, Ethylparaben, Propylparaben, Butylparaben.

Indications:

The product contributes to the skin phytosterols and vitamins, precious to the epidermic renovation and skin food.

Active Ingredients:

Vitamina E, Vitamina A, Proteine del latte e della soia.

Salient characteristics of the product

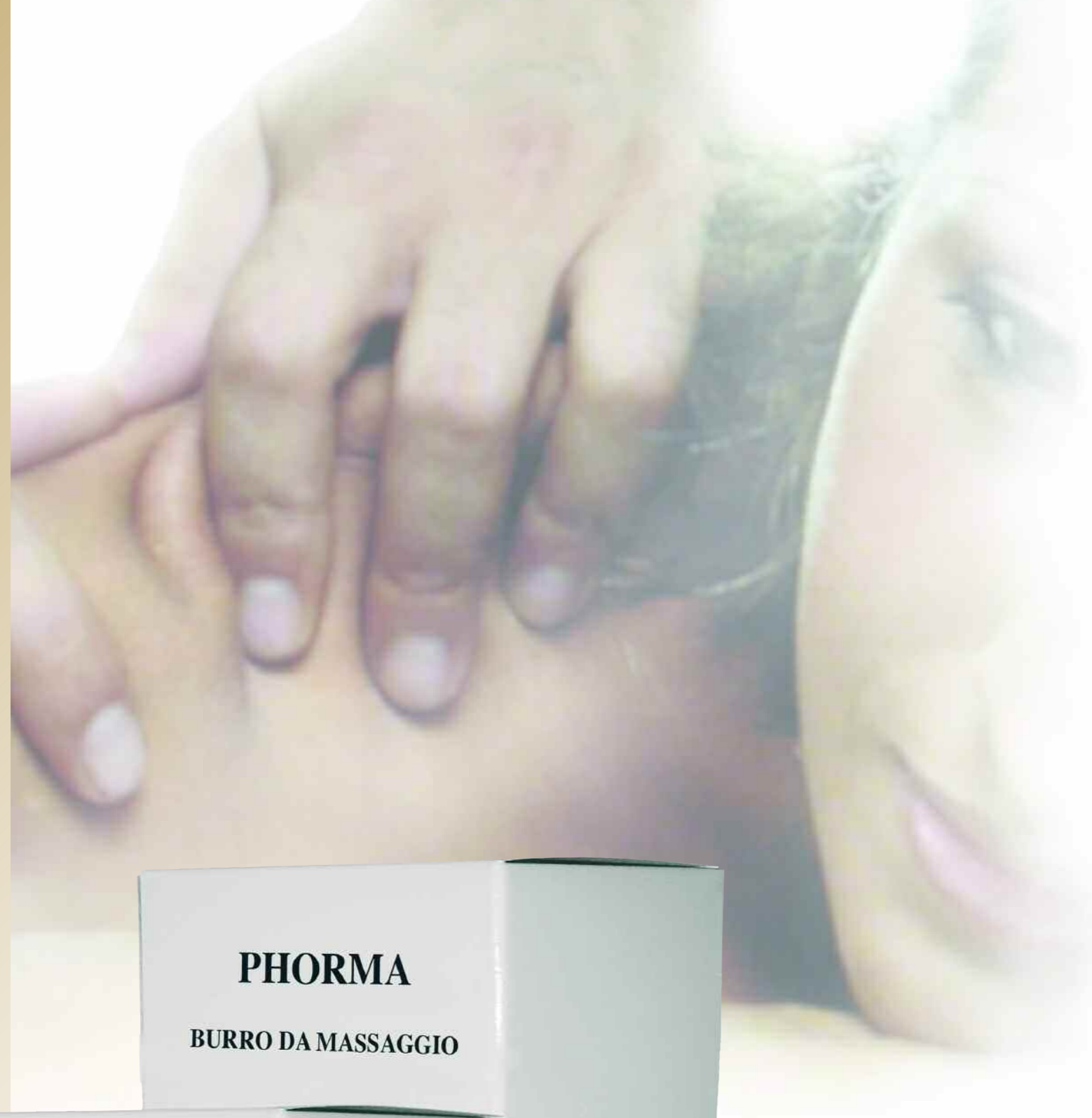
To apply the cream also too several times during the day, with light massage.

This cream is a daily speciality to a constant renewal's action to very nourishing skin, face more tonicity and contours look sharper.

A fresh formulation and effectively moisturizer to make the daily application agreeable, also too several times in the day.



Packaging:
Vase 1.69 o.z.



Massage butter

Ingredient list:

Cyclomethicone, Prunus dulcis, Glycerin dibehenate, Tribehenin, Dimethicone, Glycerin behenate, Buxus chinensis (Jojoba oil), Propylen glycol, Parfum, Tocopheryl acetate, Phenoxyethanol, Retinyl palmitate, Methylparaben, Ethylparaben, Propylparaben, Butylparaben.

Indications:

Soft and not unctuous product for the massage, rich of Jojoba oil, Almond oil, vitamin A, vitamin E

Active Ingredients:

Olio di Jojoba, Olio di mandorle, Vitamina A, Vitamina E.

Butter's salient characteristics

This butter is a product very easy to spread and, at the some time, not unctuous, which makes an excellent help for all massage's types.

The innovative formula doesn't leave residues on the skin or unctuous tracks on your dresses.

Packaging:
Vase 17.6 o.z.





Moisturizing face cream

For the various epidermic tipologie

Ingredient list:

Aqua (Water), Cyclomethicone, Glycerin, Dimethicone, Octylmetoxycinnamate, Buxus chinensis (Jojoba oil), Glycine soya, Hydroxyethyl acrylate/Sodium acryloidimethyltaurate copolymer, Sodium acrylate/acryloidimethyl copolymer, Propylen glycol, Tocopheryl acetate, Carbomer, Imidazolidinyl urea, Squalane, Isohexadecane, Hydroxypropyltrimonium hydrolized casein, Phenoxyethanol, Retinyl palmitate, Parfum (Fragance), Polysorbate-80, Hydrolized milk protein, Methylparaben, Ethylparaben, Polysorbate-60, Propylparaben, Butylparaben, Sodium cocoyl glutamate.

Indications:

Face cream soft and not unctuous which moisturizes the skin thanks to the milk's and soya's proteins and develops an anti-aging action thanks to the presence of vitamin A and vitamin E. This cream is perfect also for the mixed skins.

Active principles:

Olio di Jojoba, Vitamina A, Vitamina E, Proteine del latte e della soia.

Cream's salient characteristics

To apply on face, also every time in the day, with a delicate massage. This cream provides an excellent base for your make-up.

Packaging:
Vase 1.69 o.z.





Cleansing milk

Ingredient list:

Aqua (Water), Paraffinum liquidum, Isopropyl miristate, Glycerin, Cetearyl alcohol, Ceteth-20, Parfum, Imidazolydinilurea, Methylparaben, Propylparaben.

Indications:

Very rich and delicate formula which moisturizes while cleans. This cream remove every residues of make-up. Ideal product also for the delicate skins and subject to the rubefaction. The cream doesn't attacks the skin and gives an immediately comforting's feeling.

Compositive characteristics:

Emulsione con un eccellente potere purificante da residui di trucco, eccesso di sebo, impurità.

Cream's salient characteristics

This cream, with its light fragrance is very nourishing and not unctuous and doesn't leaves unaesthetic residues. It's excellent to prepare the skin for the make-up and for the skin's cleanliness al the end of day. The product removes every residues of make-up without to dry up or flush the skin.

Packaging:
Bottle 6.7 o.z.





Tonic lotion

Ingredient list:

Aqua (Water), Ethanol, Propylene glycol, Rosa Centifolia, Arctium lappa, Citrus limonum, Cucumis Sativus, citrus grandis, Phenoxyethanol, Methylparaben, Ethylparaben, Butylparaben.

Indications:

Utilize after the cleansing milk and to apply with cotton's flocks, insisting on forehead and on nose size.
It's advisable the application of moisturizing cream before usual make up.

Active Ingredients:

Aqua, Ethanol, Propylene glycol, Rosa Centifolia, Arctium lappa, Citrus limonum, Cucumis Sativus, citrus grandis, Phenoxyethanol, Methylparaben, Ethylparaben, Butylparaben.

Salient characteristics of the product

The product combines natural extracts and pure distillate water, reduces the pores, helps to dry the imperfections and equalize the skin.

Utilize after the cleansing milk and to apply with cotton's flocks, insisting on forehead and on nose size.

It's advisable the application of moisturizing cream before usual make up.

Packaging:
Bottle 6.7 o.z.



